

Figure 92. Manifold and Flange Assembly

SECTION II

TM 9-2330-398-24P

(1) ITEM NO	(2) SMR CODE	(3) CAGEC	(4) PART NUMBER	(5) DESCRIPTION AND USABLE ON CODES (UOC)	(6) QTY
<b>GROUP 7203 VALVES, FITTINGS, LINES</b>					
<b>FIG. 92 MANIFOLD AND FLANGE ASSEMBLY</b>					
1	PAOZZ	80204	B1821BH038F175N	SCREW, CAP, HEXAGON H..... 9/16HEX, 3/8X1-3/4-24UNF.....	32
2	PAOZZ	96906	MS27183-14	WASHER , FL AT .....	38
3	PAOZZ	80204	B1821BH038F138N	SCREW, CAP, HEXAGON.....	2
4	PAOZZ	96906	MS90726-60	SCREW, CAP, HEXAGON H.....	2
5	XBOZZ	19207	11670910	ANGLE.....	1
6	PAOZZ	96906	MS51922-21	NUT, SELF-LOCKING, HE 9/16HEX, 24UNF.....	36
7	PBOZZ	19207	11670912	TEE, FLANGE TO TUBE.....	1
8	PAOZZ	19207	11611885	COUPLING, CLAMP, PIPE.....	1
9	PAOZZ	19207	11611883	SEAL, NONMETALLIC SP PART OF .....	1
				11611885 .....	
10	PAOZZ	93061	DC604-6	COCK DRAIN.....	2
11	PAOZZ	08712	740005-960	VALVE, FLOW CONTROL .....	1
12	PAOZZ	08712	154878-001	NIPPLE .....	1
13	PAOZZ	19207	154889	TEE, PIPE .....	2
14	PAOZZ	08712	154886-001	NIPPLE .....	2
15	PAFZZ	08712	460385	VALVE, NEEDLE .....	1
16	PAOZZ	08712	154883	ELBOW, PIPE TO TUBE .....	1
17	PAOZZ	08712	154877	TUBING ASSY .....	1
18	PAOZZ	08712	154887	ADAPTER STRAIGHT, PI.....	1
19	PAOZZ	08712	154886	NIPPLE PIPE .....	2
20	XAOZZ	08712	740005-091	VALVE ASSEMBLY .....	1
21	PAOZZ	19207	11670914	GASK ET .....	4
22	PAOZZ	19207	11670911	ELBOW, FLANGE.....	1
23	PAOZZ	81343	4-2 120202BA	ELBOW, PIPE TO TUBE.....	1
24	PAOZZ	16662	AC294	SLEEVE, COMPRESSION .....	1
25	PAOZZ	79146	HO-159-4	INSERT, TUBE FITTING .....	2
26	MOOZZ	19207	12275283-7	INSERT (28.00" LG.) MAKE FROM P/N..... CPR104420-1.....	1
27	PAOZZ	96906	MS29526-2	CAP, FILLER OPENING.....	1
28	PAOZZ	92003	F418BCS	COUPLING HALF, QUICK QUICK .....	1
				DISCONNECT D1 COUPLING .....	

END OF FIGURE

SECTION II

TM 9-2330-398-24P

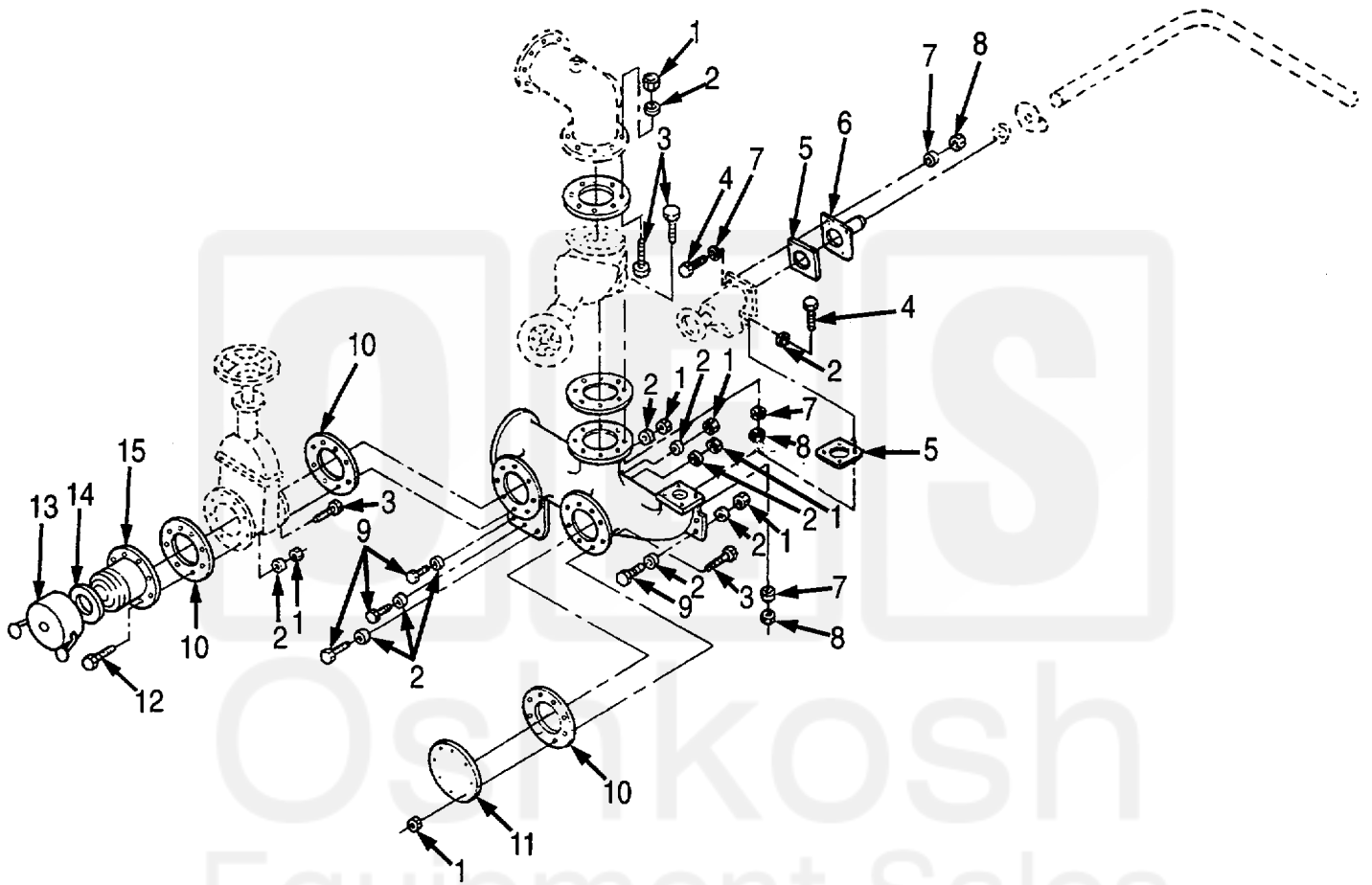


Figure 94. Piping Control Assembly

SECTION II

TM 9-2330-398-24P

(1) ITEM NO	(2) SMR CODE	(3) CAGEC	(4) PART NUMBER	(5) DESCRIPTION AND USABLE ON CODES (UOC)	(6) QTY
<b>GROUP 7203 VALVES, FITTINGS, LINES</b>					
<b>FIG. 94 PIPING CONTROL ASSEMBLY</b>					
1	PAOZZ	96906	MS51922-21	NUT, SELF-LOCKING, HE 9/16HEX, 24UNF.....	37
2	PAOZZ	96906	MS27183-14	WASHER, FLAT .....	34
3	PAOZZ	80204	B1821BH038F175N	SCREW, CAP HEXAGON .....	34
4	PAOZZ	96906	B1821BH050F175N	SCREW, CAP HEXAGON .....	8
5	PAOZZ	19207	11670915	GASKET .....	2
6	PAOZZ	19207	11670916	ADAPTER, STRAIGHT, FL CABINET.....	1
INSTALLATION .....					
7	PAOZZ	96906	MS27183-18	WASHER, FLAT .....	8
8	PAOZZ	96906	MS51922-37	NUT, SELF-LOCKING, HE .....	8
9	PAOZZ	96906	MS90727-63	SCREW, CAP, HEXAGON H.....	5
9/16HEX, 3/8x1-3/8-24UNF .....					
10	PAOZZ	19207	11670914	GASKET .....	5
11	PAOZZ	19207	11685972	COVER, ACCESS .....	1
12	PAOZZ	80204	B1821BH038F150N	SCREW, CAP, HEXAGON H.....	8
9/16HEX, 3/8x1-1/2-24UNF .....					
13	PAOZZ	96906	MS27028-17	CAP, QUICK DISCONNEC.....	1
14	PAOZZ	96906	MS27030-9	GASK ET .....	2
15	PAOZZ	9H113	633LAT2X3	COUPLING HALF, QUICK 4" CAM-LOCK .....	1
16	PAOZZ	19207	11670913	MANIFOLD, DISCHARGE.....	1

END OF FIGURE

